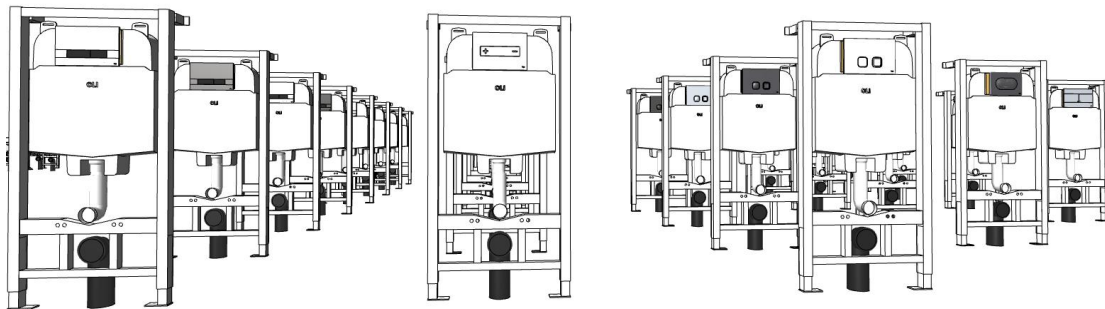




OLI - Sanitary Systems Controls & Cisterns

BIM library installation and use instructions [Archicad]



DEVELOPER: www.conceptsysBIM.com
REVISION: EN_2.0
DATE: 30-08-2017
VERSION: 18, 19, 20 & 21

1. Installation.....	2
1.1. Library file contents.....	2
1.2. Loading the library.....	2
2. Library parts options.....	4
2.1. General description.....	4
2.2. Control Plate Selection window.....	4
2.3. Frame Selection window.....	5
2.4. 2D/3D configurations window.....	5
2.5. Manufacturer window.....	6
2.6. BIM data.....	6
3. Using the Library Parts.....	7
3.1. Plan View.....	7
3.2. 3D View.....	7
4. About OLI - Sanitary Systems.....	8

1. Installation

1.1. Library file contents

After decompressing the downloaded library file from the internet you may find the following types of files:

LCF - ARCHICAD library file (compatible with Archicad versions 18,19,20 & 21)

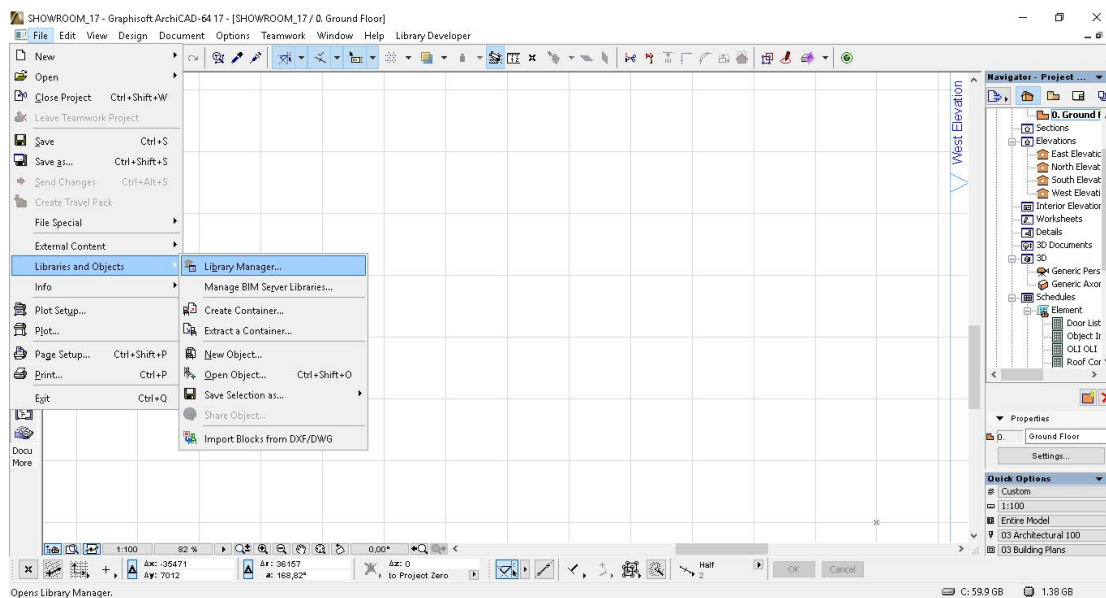
PDF - Instructions files (such as this document)

XML - Scheme settings predefined file

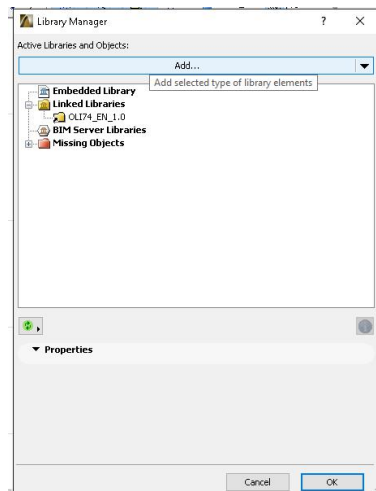
These files can be placed together or separated anywhere in your drive.
ARCHICAD will ask for LCF and XML file path location upon load of these files.

1.2. Loading the library

After opening ARCHICAD either in a new or previously defined project file, access File Manager through File > Libraries and Objects > Library Manager...

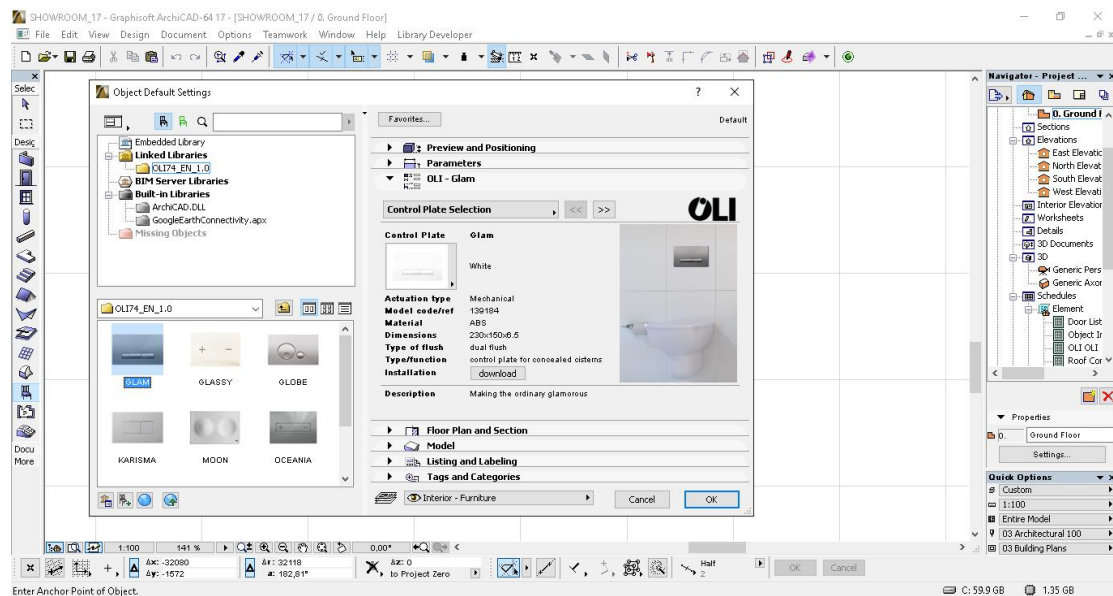


In Library Manager click Add... and set the path to the LCF file or the folder where it is located¹.



After this step, you will find the objects available through the Object Tool under Design > Design Tools > Object, or by clicking the Object Icon on the Tools toolbar.

Please find it under Linked Libraries tab.



¹ You can also point to any parent folder to the location of the file.

2. Library parts options

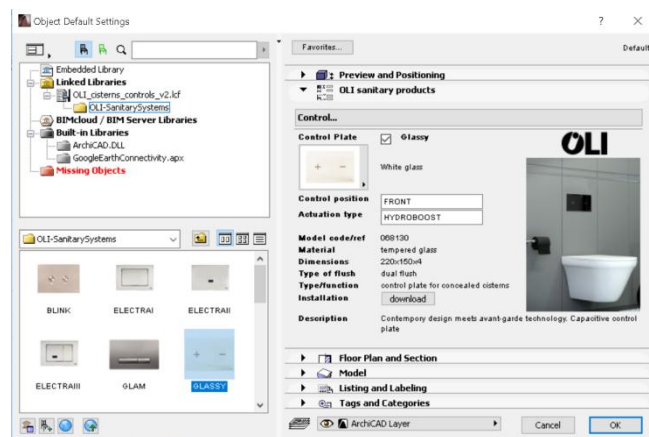
2.1.General description

OLI Archicad Library parts were developed to become productivity tools, easy and simple to use, yet powerful and complete regarding product's installation and prescription.

OLI Archicad Library is visually organized by Control Plates allowing users to choose by the most visible part of the product. Yet, after choosing the Control plates, users may also choose an adequate framing system and mechanism and check if it will fit the available wall space.

OLI Archicad Library is developed with a User Interface that will help users choose the available options for the product, under the following menus: Control Plate selection, Frame Selection, 2D/3D configurations, Manufacturer (information and contacts)

2.2.Control Plate Selection window



After visually choosing a Control Plate model (lower left window) the user can interactively select the finishing material for this Control Plate by clicking in the Material drop-down menu.

Basic information fields for this product will update according to the user's choice.

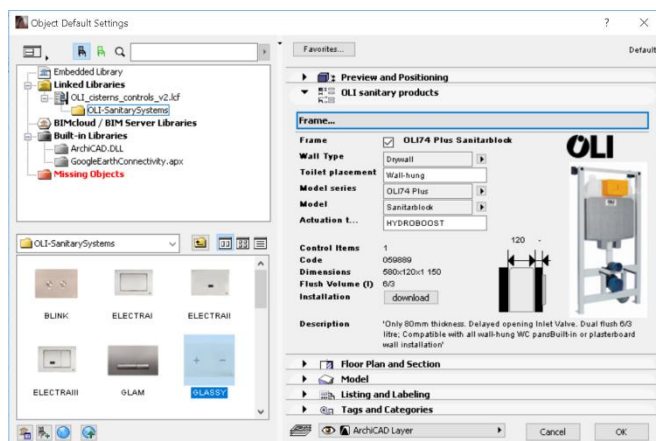
If the user doesn't want to place a Control Plate (just wants to place a Frame or Cistern) he/she can uncheck the check box button near the Control

name in the upper right user interface.

A Download button will allow the download of installation instructions PDF.²

² Internet connection needed for this feature.

2.3. Frame Selection window



By navigating to the Frame Selection window the user will be able to select the right frame to hold the Control Plate. User will be able to select the type of wall (Drywall or Solid Wall), the frame system and the actuation type when more than one is available.

All basic information (including needed space inside the wall) will be dynamically displayed according to the user choices.

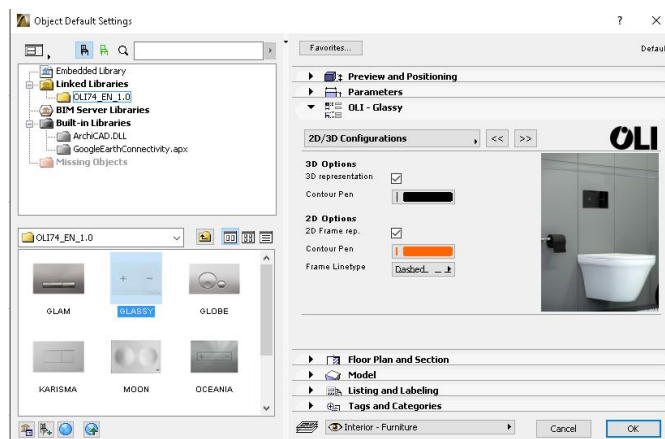
If the user doesn't want a frame (just wants the Control Plate) he/she can uncheck the check box button near the

Frame name in the upper right user interface.

A Download button will allow the download of frame installation instructions PDF.³

2.4.2D/3D configurations window

Under the 2D/3D configurations window, the user will be able to configure how the object will look in 2D and 3D views.

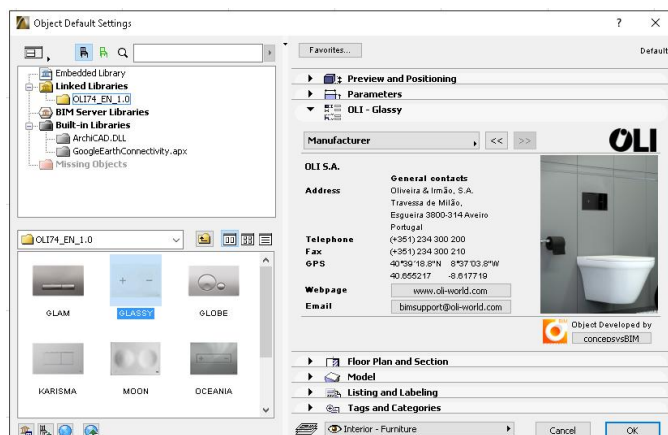


In order to make using these library parts lighter in the projects, there is an option to turn frame off. Since frames are usually inside the walls, this option will make working in 3D faster.

Please note that this option will not prevent the frame to be accounted for in Schedules.

³ Internet connection needed for this feature.

2.5. Manufacturer window



The manufacturer window will show the manufacturer's contacts, website and e-mail links.

2.6. BIM data

Detailed Product's information fields are available under the Parameters tab of the Object Settings. This data is available for listings and changes dynamically according to the choices of the user.

An automatic updated field for Control Plate quantity is available and,

will be set to 0 if the check box near the product name in the Control Plate menu is unchecked, allowing the user to define just the cistern/frame set;

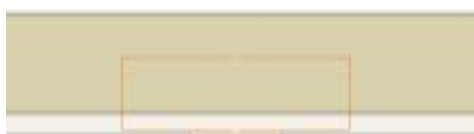
will be set to 1 when if the check box near the product name in the Control Plate menu is checked, allowing the user to define 1 Control Plate + 1 Cistern/frame set in listings;

Will be set to 2 when the user chooses a 'Double' type frame, allowing to define 2 Control Plates + 1 double cistern / frame set in listings.

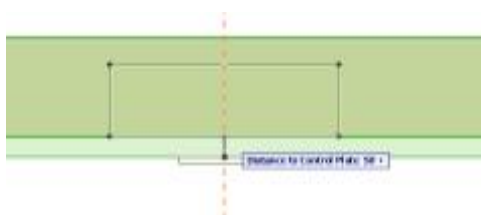
3. Using the Libray Parts

3.1.Plan View

In order to place an object in 2D view, just place the Control Plate in the exterior face of the wall.

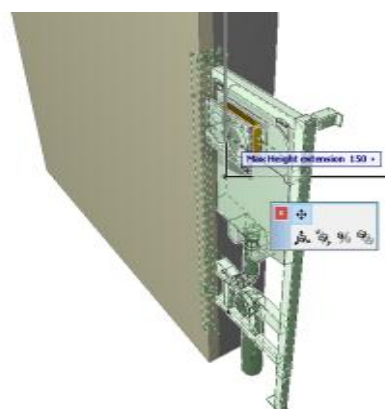
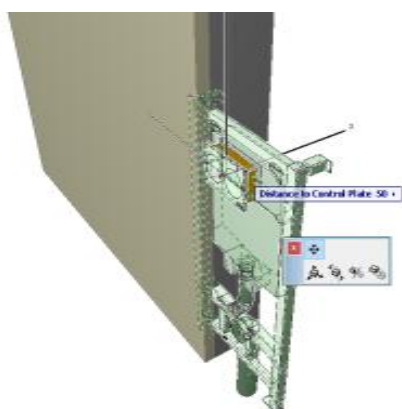


By moving the dynamic hotspot users can define the precise placement of the Frame inside the wall. This distance is constrained by the real product installation constraints.



3.2.3D View

Once placed in 2D or 3D view, Control Plate will be placed at it's default height. Frame feet hight and cistern placement inside the wall can be dynamically fine tuned through 3D dynamic hotspots.



4. About OLI - Sanitary Systems

On March 1st of 1954, Oliveira & Irmão SA was founded in Aveiro as a small family business that along its path went through different areas of business. In the 1980s OLI set up its first cistern production unit. During the following ten years.

OLI grew exponentially, which led to the integration with the Italian Fondital Group in 1993. The group has about 2,600 employees and is present in four sectors of activity: heating; aluminum; hydraulic and chrome plating; and fire protection. OLI Italy was established in order to increase our presence in Italy and Europe.

For over 60 years we have been committed to growing our business sustainably, by investing in new products and markets. Our global success can be attributed in large part to our continuous effort to better our products and anticipate market needs. We strive to continue to grow and expand our business. At the same time, we want to achieve this without forgetting our roots, the fact that we are a business founded on traditional and family values.

Throughout its history of 60 plus years, OLI has received many distinctions and awards. This demonstrates our commitment to excellence and our respect for the user of our products. We are one of the Portuguese companies with the most patents and are at the forefront of investment in Research, Development and Innovation.

We strive to build a strong bond with you based on mutual trust and to become your sanitary systems supplier of choice.

We will do this through continuous improvement; through the development of innovative, sustainable and market ready products; and; finally; by relying on your feedback and market insights.

